

# WHITNEY

## Press Release

Contact:

Jan Rothschild, Stephen Soba, Meghan Bullock

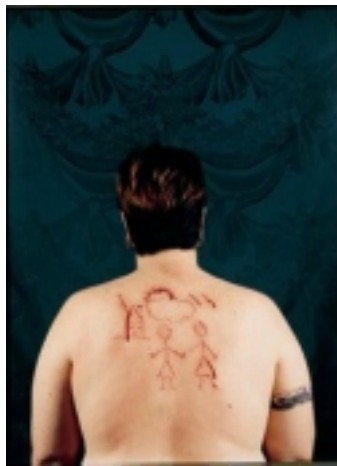
(212) 570-3633 or [pressoffice@whitney.org](mailto:pressoffice@whitney.org)

[www.whitney.org/press](http://www.whitney.org/press)

December 2005

### WHITNEY TO PRESENT *SKIN IS A LANGUAGE*, AN EXHIBITION OF SCULPTURE, DRAWING, PHOTOGRAPHY, AND PRINTS FROM THE COLLECTION

JANUARY 12 - MAY 21, 2006



Catherine Opie, *Self Portrait/Cutting*, 1993

In the fifth-floor Ames Gallery, from January 12 through May 21, 2006, the Whitney Museum of American Art presents *Skin Is a Language*, an exhibition devoted to works that investigate artistic interpretations relating to the body's outer layer. The exhibition is co-curated by Carter Foster, curator of drawings, and Apsara DiQuinzio, curatorial assistant.

Featuring sculpture, drawing, photography, and prints from the permanent collection, the exhibition includes works by Bruce Conner, Ellen Gallagher, Félix González-Torres, Nancy Grossman, Eva Hesse, Roni Horn, Jasper Johns, Annette Lemieux, Glenn Ligon, Catherine Opie, and David Wojnarowicz.

The largest organ of the human body, skin is also the one with which we are most intimate, even as it presents the exterior of our self to the world. This exhibition explores ways in which artists use skin, literally and metaphorically, to examine a diverse array of social, physical, and cultural

phenomena. Themes include: skin as an index of identity; skin as a permeable boundary and as a tactile surface; and skin as a site for cultural and sensorial perception.

Works by Glenn Ligon, David Wojnarowicz, Ellen Gallagher, and Catherine Opie investigate how skin becomes a contested terrain where differing perceptions of identity surface. Conversely, in works by Nancy Grossman, Roni Horn, and Annette Lemieux, skin is the location of disguise--a vehicle for the masking of identity. Skin denotes the passage of time in the work of Félix González-Torres, Eva Hesse and Bruce Conner, where physical presence and absence permeate one another to suggest a shifting reality. Through a variety of means, the artists in this exhibition explore how different metaphors for skin visually communicate ideas that extend far beyond our literal understanding of the familiar, physical organ.

### **About The Whitney Museum**

The Whitney Museum of American Art is the leading advocate of 20<sup>th</sup>- and 21<sup>st</sup>-century American art. Founded in 1930, the Museum is regarded as the preeminent collection of American art and includes major works and materials from the estate of Edward Hopper, the largest public collection of works by Alexander Calder, Louise Nevelson, and Lucas Samaras, as well as significant works by Jasper Johns, Donald Judd, Agnes Martin, Bruce Nauman, Georgia O'Keeffe, Claes Oldenburg, Kiki Smith, and Andy Warhol, among other artists. With its history of exhibiting the most promising and influential American artists and provoking intense debate, the Whitney's signature show, the Biennial, has become the most important survey of the state of contemporary art in America today.

### **Current and Upcoming Exhibitions at the Whitney Museum of American Art:**

<b>Building and Breaking the Grid, 1962-2002</b>	<b>Through January 8, 2006</b>
<b>The New City: Sub/Urbia in Recent Photography</b>	<b>Through January 15, 2006</b>
<b>Course of Empire: Paintings by Ed Ruscha</b>	<b>Through January 29, 2006</b>
<b>Richard Tuttle</b>	<b>Through February 5, 2006</b>
<b>Oscar Bluemner: A Passion for Color</b>	<b>Through February 12, 2006</b>
<b>Morgan Fisher</b>	<b>Through February 12, 2006</b>
<b>Raymond Pettibon</b>	<b>Through February 19, 2006</b>
<b>Whitney Biennial 2006</b>	<b>March 2-May 28, 2006</b>
<b>Permanent Collection: 75th Anniversary Exhibition</b>	<b>June-September 2006</b>
<b>Picasso and American Art</b>	<b>September 28, 2006-January 28, 2007</b>
<b>Kiki Smith: A Gathering, 1980-2005</b>	<b>November 16, 2006-February 11, 2007</b>

*The Whitney Museum is located at 945 Madison Avenue, New York City. Museum hours are: Wednesday, Thursday, Saturday, and Sunday from 11 a.m. to 6 p.m., Friday from 1 p.m. to 9 p.m., closed Monday and Tuesday. For information, please call 1-800 WHITNEY or visit [www.whitney.org](http://www.whitney.org)*

### **Current and Upcoming Exhibitions at the Whitney Museum of American Art at Altria:**

<b>Rob Fischer</b>	<b>Through January 22, 2006</b>
<b>Andrea Zittel: Wagon Stations</b>	<b>February 9 – June 18, 2006</b>

*The Whitney Museum of American Art at Altria is located at 120 Park Avenue at 42nd Street. Gallery hours: Monday through Friday from 11 a.m. to 6 p.m., Thursdays 11 a.m. to 7:30 p.m. Sculpture Court Hours: Monday through Saturday from 7:30 a.m. to 9:30 p.m., Sundays and holidays 11 a.m. to 7 p.m. The Whitney Museum at Altria is funded by Altria Group, Inc. Admission is free. Free gallery talks are offered every Wednesday and Friday at 1:00 p.m. For further information, please call (917) 663-2453.*