

# WHITNEY

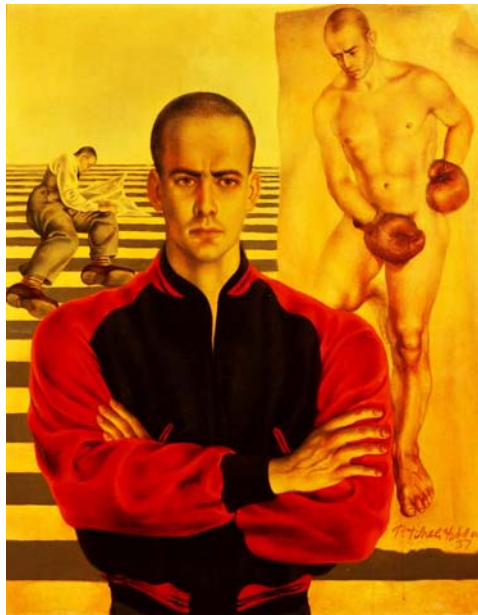
Whitney Museum of American Art  
945 Madison Avenue at 75th Street  
New York, NY 10021  
[www.whitney.org/press](http://www.whitney.org/press)

Tel. (212) 570-3633  
Fax (212) 570-4169  
[pressoffice@whitney.org](mailto:pressoffice@whitney.org)

## Press Release

Contact:  
Whitney Museum of American Art  
Stephen Soba, Kira Garcia  
(212) 570-3633  
[www.whitney.org/press](http://www.whitney.org/press)  
March 2007

### WHITNEY MUSEUM TO PRESENT A TRIBUTE TO LINCOLN KIRSTEIN BEGINNING APRIL 25, 2007



Pavel Tchelitchew, *Portrait of Lincoln Kirstein*, 1937  
Courtesy of The School of American Ballet, Photograph by Jerry L. Thompson

The Whitney Museum of American Art is observing the 100th anniversary of Lincoln Kirstein's birth with an exhibition focusing on a diverse trio of artists from Kirstein's circle: Walker Evans, Elie Nadelman, and Pavel Tchelitchew. *Lincoln Kirstein: An Anniversary Celebration*, conceived by guest curator Jerry L. Thompson, working with Elisabeth Sussman and Carter Foster, opens in the Museum's 5<sup>th</sup>-floor Ames Gallery on April 25, 2007. Selections from Kirstein's writings form the basis of the labels and wall texts.

Lincoln Kirstein (1906-96), a noted writer, scholar, collector, impresario, champion of artists, and a hugely influential force in American culture, engaged with many notable artistic and literary figures, and helped shape the way the arts developed in America from the late 1920s onward. His involvement with choreographer George Balanchine, with whom he founded the School of American Ballet and New York City Ballet, is perhaps his best known accomplishment.

This exhibition focuses on the photographer Walker Evans, the sculptor Elie Nadelman, and the painter Pavel Tchelitchew, each of whom was important to Kirstein. Kirstein curated the first major Evans exhibition and wrote the introduction to Evans' book *American Photographs* (1938). He rescued the reputation of Elie Nadelman from relative obscurity and wrote monographs devoted to his sculpture and drawing. From Tchelitchew, Kirstein commissioned a portrait of himself that is one of the painter's greatest works; Kirstein collected his art and wrote about him extensively.

The entire 2007 spring season of the New York City Ballet has been dedicated to Lincoln Kirstein. In addition, the City Ballet is partnering with the Whitney to offer audiences a special Kirstein Centennial Celebration Series. In addition to two programs of dances, ticket-buyers can enjoy a pre-performance reception with Whitney curator Carter Foster, who will provide an inside look at the Whitney's Kirstein exhibition. Further information is available by calling 1-800-580-8730 or visiting [www.nycballet.com](http://www.nycballet.com).

### ***About the Whitney***

The Whitney Museum of American Art is the leading advocate of 20<sup>th</sup>- and 21<sup>st</sup>-century American art. Founded in 1930, the Museum is regarded as the preeminent collection of American art and includes major works and materials from the estate of Edward Hopper, the largest public collection of works by Alexander Calder, Louise Nevelson, and Lucas Samaras, as well as significant works by Jasper Johns, Donald Judd, Agnes Martin, Bruce Nauman, Georgia O'Keeffe, Claes Oldenburg, Kiki Smith, and Andy Warhol, among other artists. With its history of exhibiting the most promising and influential American artists and provoking intense critical and public debate, the Whitney's signature show, the Biennial, has become the most important survey of the state of contemporary art in America today.

### **Current and Upcoming Exhibitions at the Whitney Museum of American Art:**

Lights, Camera, Action: Artists' Films for the Cinema 2D →3D	Through April 1, 2007 Through April 22, 2007
Gordon Matta-Clark Films & Videos	April 4-29, 2007
Uncontained	Through April 29, 2007
Lorna Simpson	Through May 6, 2007
Terence Koh	Through May 27, 2007
Gordon Matta-Clark	Through June 3, 2007
Taryn Simon	Through June 24, 2007
Lincoln Kirstein	Opens April 25, 2007
Summer of Love: Art of the Psychedelic Era	May 24-September 16, 2007
Rudolf Stingel	June 28-October 14, 2007
Kara Walker	October 11, 2007-Feb. 3, 2008
Lawrence Weiner	Opens November 15, 2007
Demuth's Late Paintings of Lancaster	February 23-April 27, 2008
2008 Whitney Biennial	Opens March 2008

*The Whitney Museum is located at 945 Madison Avenue, New York City. Museum hours are: Wednesday, Thursday, Saturday, and Sunday from 11 a.m. to 6 p.m., Friday from 1 p.m. to 9 p.m., closed Monday and Tuesday. For information, please call 1-800 WHITNEY or visit [www.whitney.org](http://www.whitney.org)*

***Current and Upcoming Exhibitions at the Whitney Museum of American Art at Altria:***

**Matthew Brannon**

**Opens March 29, 2007**

*The Whitney Museum of American Art at Altria is located at 120 Park Avenue at 42nd Street. Gallery hours: Monday through Friday from 11 a.m. to 6 p.m., Thursdays 11 a.m. to 7:30 p.m. Sculpture Court Hours: Monday through Saturday from 7:30 a.m. to 9:30 p.m., Sundays and holidays 11 a.m. to 7 p.m. The Whitney Museum at Altria is funded by Altria Group, Inc. Admission is free. Free gallery talks are offered every Wednesday and Friday at 1:00 p.m. For further information, please call (917) 663-2453.*

Filename: Lincoln Kirstein release1  
Directory: L:\DEPT\COMMUN\RELEASES  
Template: C:\Documents and Settings\ikiga\Application  
Data\Microsoft\Templates\Normal.dot  
Title: LINCOLN KIRSTEIN  
Subject:  
Author: stso  
Keywords:  
Comments:  
Creation Date: 2/2/2007 3:34 PM  
Change Number: 4  
Last Saved On: 2/13/2007 11:32 AM  
Last Saved By: stso  
Total Editing Time: 5 Minutes  
Last Printed On: 3/14/2007 1:30 PM  
As of Last Complete Printing  
Number of Pages: 3  
Number of Words: 762 (approx.)  
Number of Characters: 4,344 (approx.)