

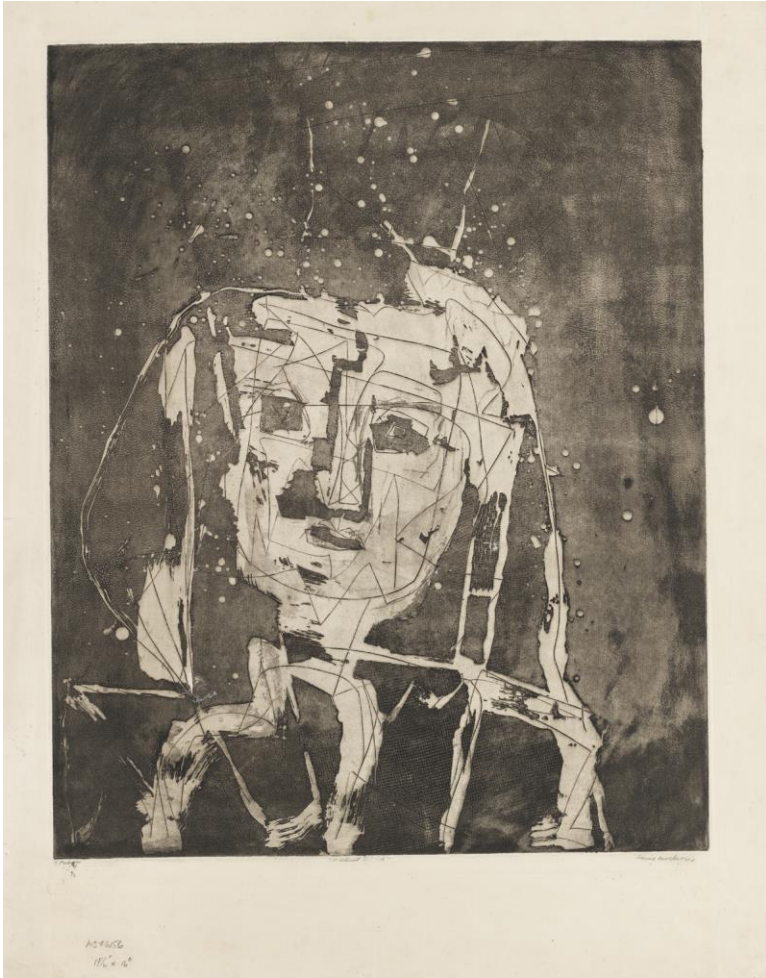
WHITNEY

Whitney Museum
of American Art
Press Office

99 Gansevoort Street
New York, NY 10014

pressoffice@whitney.org
(212) 570-3633

PRESS RELEASE



Louise Nevelson (1899-1988), *The Face in the Moon*, 1953-55. Etching: sheet, 20 × 26 1/16 in. (50.8 × 66.2 cm); plate, 17 7/8 × 21 5/8 in. (45.4 × 54.9 cm). Edition 1/20. Whitney Museum of American Art, New York; gift of the artist 69.247. © 2018 Estate of Louise Nevelson/Artists Rights Society (ARS), New York

THE FACE IN THE MOON: DRAWINGS AND PRINTS BY LOUISE NEVELSON EXPLORES THE ARTIST'S WORKS ON PAPER

NEW YORK, JUNE 14, 2018 – *The Face in the Moon: Drawings and Prints* by Louise Nevelson opens at the Whitney Museum of American Art on July 20, 2018. Drawn entirely from the Whitney's extensive holdings of her work, this exhibition presents a career-spanning selection of works on paper by Louise Nevelson (1899–1988).

Nevelson emphasized her reliance on the processes of drawing and collage to create the monochromatic wooden sculptures for which she is best known. This exhibition will be an opportunity to focus closely on her use of these processes in her works on paper, many of which, like her sculptures, involved building compositions out of unconventional or recycled materials.

The human figure is at the center of Nevelson's early line drawings, often depicted from multiple perspectives. Over time, her figures became increasingly schematic as she deepened her interest in modern dance and the constraints of the body.

The prints on view in this exhibition include works from her two most significant bodies of print works, those made in the mid-1950s at Atelier 17 in New York City and those made in the mid-1960s at Tamarind Lithography Workshop in Los Angeles. In her prints, she layered scraps of fabric to create deeply textured compositions inhabited by mystical figures and architectural forms. Similarly, her collages reconfigure the disparate materials from which they are composed, including scraps of paper and foil, into unexpected compositions.

Clémence White, curatorial assistant, remarked, "Nevelson's works on paper help to elucidate the processes of this artist whose transformation of her materials challenges us to notice the expressive potential of common or overlooked things, and through this, to see our environments differently."

The Face in the Moon: Drawings and Prints by Louise Nevelson will be on view in the Susan and John Hess Family Gallery on the Museum's third floor.

Curatorial Credit

This exhibition is organized by Clémence White, curatorial assistant.

About the Whitney

The Whitney Museum of American Art, founded in 1930 by the artist and philanthropist Gertrude Vanderbilt Whitney (1875–1942), houses the foremost collection of American art from the twentieth and twenty-first centuries. Mrs. Whitney, an early and ardent supporter of modern American art, nurtured groundbreaking artists at a time when audiences were still largely preoccupied with the Old Masters. From her vision arose the Whitney Museum of American Art, which has been championing the most innovative art of the United States for more than eighty years. The core of the Whitney's mission is to collect, preserve, interpret, and exhibit American art of our time and serve a wide variety of audiences in celebration of the complexity and diversity of art and culture in the United States. Through this mission and a steadfast commitment to artists themselves, the Whitney has long been a powerful force in support of modern and contemporary art and continues to help define what is innovative and influential in American art today.

Current and Upcoming Exhibitions at the Whitney Museum of American Art

Mary Corse	Until November 25, 2018
Pacha, Llaqta, Wasichay: Indigenous Space, Modern Architecture, New Art	July 13 – September 30, 2018
David Wojnarowicz: History Keeps Me Awake at Night	July 13 – September 30, 2018
The Face in the Moon: Drawings and Prints by Louise Nevelson	Opens July 20, 2018
Eckhaus Latta: Possessed	August 3 – October 8, 2018
Kevin Beasley	Opens Fall 2018
Andy Warhol – From A to B and Back Again	November 12, 2018 – March 31, 2019
Between the Waters	Until July 22, 2018
An Incomplete History of Protest: Selections from the Whitney's Collection, 1940–2017	Until August 27, 2018
Flash: Photographs by Harold Edgerton from the Whitney's Collection	Ongoing
Where We Are: Selections from the Whitney's Collection 1900–1960	Ongoing
Christine Sun Kim: Too Much Future	Ongoing

The Whitney Museum of American Art is located at 99 Gansevoort Street between Washington and West Streets, New York City. Museum hours are: Monday, Wednesday, Thursday, and Sunday from 10:30 am to 6 pm; Friday and Saturday from 10:30 am to 10 pm. Closed Tuesday. Adults: \$25. Full-time students and visitors 65 & over: \$18. Visitors 18 years & under and Whitney members: FREE. Admission is pay-what-you-wish on Fridays, 7–10 pm. For general information, please call (212) 570-3600 or visit whitney.org.

###