

WHITNEY

Whitney Museum of American Art Acquisitions of Work by New Artists to the Collection (Nov. 2018—Apr. 2019)



Nina Chanel Abney

White River Fish Kill, 2017

Acrylic and spray on canvas

Overall: 84 3/16 × 120 1/8in. (213.8 × 305.1 cm)

Purchase, with funds from the Painting and Sculpture Committee and Paul J. Schupf
2018.145



Dan Asher

Untitled, 1980

Watercolor on paper

Sheet: 17 7/8 × 11 15/16in. (45.4 × 30.3 cm)

Gift of Avo Samuelian and Hector Manuel Gonzalez 2018.305



Dan Asher

Untitled, 1980

Watercolor on paper

Sheet: 17 × 10 15/16in. (43.2 × 27.8 cm)

Gift of Avo Samuelian and Hector Manuel Gonzalez 2018.306



Dan Asher

Untitled, 1980

Acrylic on paper

Sheet: 12 x 9in. (30.5 x 22.9 cm)

Gift of Avo Samuelian and Hector Manuel Gonzalez 2018.307



Dan Asher

Untitled, 1980

Acrylic on paper

Sheet: 18 x 12in. (45.7 x 30.5 cm)

Gift of Avo Samuelian and Hector Manuel Gonzalez 2018.308



Dan Asher

Untitled, 1980

Acrylic on paper

Sheet: 12 x 9in. (30.5 x 22.9 cm)

Gift of Avo Samuelian and Hector Manuel Gonzalez 2018.309



Dan Asher

Untitled, 1980

Acrylic on paper

Sheet (sight): 16 7/8 x 14in. (42.9 x 35.6 cm)

Gift of Avo Samuelian and Hector Manuel Gonzalez 2018.310



Rachel bas-Cohain

Spool Grind and Distortions from the Rubber, 1976

Lithograph and collage

Sheet: 30 3/16 x 22 1/2in. (76.7 x 57.2 cm)

Purchase, with funds from the Print Committee 2018.179.17



Meriem Bennani

Siham & Hafida, 2017

Video, color, sound, 30 min., and installation elements

Aspect Ratio: 16:9

Dimensions variable

Purchase, with the funds from the Film and Video Committee 2019.39



Maude Boltz

Untitled, 1975

Lithograph

Sheet: 30 1/8 x 22 1/4in. (76.5 x 56.5 cm)

Image: 27 1/16 x 17 9/16in. (68.7 x 44.6 cm)

Purchase, with funds from the Print Committee 2018.179.13



Kwame Brathwaite

Untitled (Sikolo with Carolee Prince Designs), 1968, printed 2018

Inkjet print

Sheet (sight): 29 5/8 x 29 5/8in. (75.2 x 75.2 cm)

Image (sight): 29 5/8 x 29 5/8in. (75.2 x 75.2 cm)

Purchase, with funds from Niko Elmaleh 2018.134



Kwame Brathwaite

Untitled (Self Portrait), 1964, printed 2018

Inkjet print

Sheet (sight): 14 9/16 x 14 9/16in. (37 x 37 cm)

Image (sight): 14 9/16 x 14 9/16in. (37 x 37 cm)

Purchase, with funds from Niko Elmaleh 2018.135



Kwame Brathwaite

Untitled (Photo shoot at a school for one of the many modeling groups who had begun to embrace natural hairstyles in the 1960s), c.1966, printed 2018

Inkjet print

Sheet (sight): 29 5/8 x 29 5/8in. (75.2 x 75.2 cm)

Image (sight): 29 5/8 x 29 5/8in. (75.2 x 75.2 cm)

Purchase, with funds from Brian Silver 2018.136



Esther Bubley

A young negro field worker on the C.L. Hardy tobacco plantation near Maury, N.C., 1946

Gelatin silver print

Image: 7 1/8 x 8 5/8in. (18.1 x 21.9 cm)

Purchase, with funds from the Photography Committee 2018.210



Esther Bubley

Bus Story. First Bus Trip. Trip from Louisville KY to Memphis TN, 1942

Gelatin silver print

Image: 10 5/16 x 10 5/16in. (26.2 x 26.2 cm)

Purchase, with funds from the Photography Committee 2018.211



Carolina Caycedo

She Came From The Deep/Ella vino de lo profundo, 2017

Tar-dipped fishing net, lead weights, framed Virgin image, thread, dried vine, natural cotton balls with seeds, candle, bird's nest, dried flowers, wooden pan flute

Overall: 88 x 24 x 19 1/2in. (223.5 x 61 x 49.5 cm)

Purchase, with funds from the Painting and Sculpture Committee 2018.181



Carolina Caycedo

The Binding/El amarre, 2017

Nylon fishing net, lead weights, hand-dyed cotton cord, hand-dyed jute cord, leather whips, jute thread, dry cattails, seeds, plastic sack

Overall: 117 x 11 1/4 x 11 1/4in. (297.2 x 28.6 x 28.6 cm)

Purchase, with funds from the Painting and Sculpture Committee 2018.182



Carolina Caycedo

Cosmotarraya Rio Ribeira, 2016

Hand-dyed artisanal fishing net, lead weights, nylon fishing nets with foam floaters, sandals, synthetic-fiber pants, moss, string, and bottle with oil

Overall: 88 1/2 x 31 3/4 x 25 3/4in. (224.8 x 80.6 x 65.4 cm)

Purchase, with funds from the Painting and Sculpture Committee 2018.215



Ed Clark

Winter Bitch, 1959

Acrylic on canvas

Overall: 77 x 77 in. (195.6 x 195.6 cm)

Purchase, with funds from the Painting and Sculpture Committee and partial gift of the artist T.2018.603



Jean Conner

Are You a Springmaid?, 1960

Collage

Sheet (sight): 11 7/8 x 9 13/16in. (30.2 x 24.9 cm)

Image (sight): 11 7/8 x 9 13/16in. (30.2 x 24.9 cm)

Purchase, with funds from Sheree and Jerry Friedman 2018.203



Jean Conner

Are You a Springmaid? II, 1960

Collage

Sheet (sight): 11 7/8 x 9 13/16in. (30.2 x 24.9 cm)

Image (sight): 11 7/8 x 9 13/16in. (30.2 x 24.9 cm)

Purchase, with funds from Sheree and Jerry Friedman 2018.204



Jean Conner

Tomato Soup, 1960

Collage

Sheet (sight): 9 1/8 x 9 3/8in. (23.2 x 23.8 cm)

Image (sight): 9 1/16 x 9 3/8in. (23 x 23.8 cm)

Purchase, with funds from the Drawing Committee and Peter and Beverly Lipman 2018.205



Jean Conner

Room, 1966

Collage

Sheet (sight): 9 1/4 x 7in. (23.5 x 17.8 cm)

Image (sight): 9 1/4 x 7in. (23.5 x 17.8 cm)

Purchase, with funds from Peter and Beverly Lipman 2018.206



Jean Conner

Summer - East River, 1968

Collage

Sheet (sight): 13 3/8 x 9 3/16in. (34 x 23.3 cm)

Image (sight): 13 3/8 x 9 3/16in. (34 x 23.3 cm)

Purchase, with funds from Peter and Beverly Lipman 2018.207



Jacky Connolly

Hudson Valley Ruins, 2016

Video, color, sound, 30 min.

Aspect Ratio: 16:9

Purchase, with funds from Anne and Joel Ehrenkranz 2018.129



Mira Dancy

Sinking Sky, 2017

Acrylic on canvas

Overall: 80 x 110in. (203.2 x 279.4 cm)

Purchase, with funds from the Painting and Sculpture Committee 2018.209



Charles Dellschau

Aero Ploltz Airpress Motors, 1919

Opaque watercolor, graphite pencil, pen and ink, collaged newspaper and collaged drawing on paper (recto); Opaque watercolor, graphite pencil, pen and ink, collaged newspaper and collaged drawing on paper (verso)

Sheet (Irregular (sight)): 18 x 23 1/2in. (45.7 x 59.7 cm)

Image (Irregular (sight)): 18 x 23 1/2in. (45.7 x 59.7 cm)

Gift of Carol Mancusi-Ungaro in honor of William J. Steen 2018.225a-b



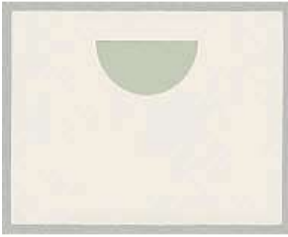
Daria Dorosh

Untitled, 1976

Etching

Sheet: 22 x 29 3/4in. (55.9 x 75.6 cm)

Purchase, with funds from the Print Committee 2018.179.4



Loretta Dunkelman

Untitled, 1974

Etching

Sheet: 22 1/4 x 30 1/8in. (56.5 x 76.5 cm)

Plate: 18 1/4 x 27 5/8in. (46.4 x 70.2 cm)

Purchase, with funds from the Print Committee 2018.179.9



Teresita Fernandez

Sfumato, 2017

Inkjet print

Sheet: 16 x 20in. (40.6 x 50.8 cm)

Image: 16 x 20in. (40.6 x 50.8 cm)

Gift of Fern and Lenard Tessler 2018.180



Ilona Granet

Curb Your Animal Instinct [Emily Post Street Signs], 1986

Screenprint on metal

Sheet: 25 x 26in. (63.5 x 66 cm)

Image: 21 5/8 x 23 3/4in. (54.9 x 60.3 cm)

Purchase, with funds from Nancy Poses and Fern Kaye Tessler 2018.156



Ilona Granet

No Cat Calls [Emily Post Street Signs], 1987

Screenprint on metal

Sheet: 33 1/4 x 33 5/8in. (84.5 x 85.4 cm)

Image: 31 7/8 x 31 7/8in. (81 x 81 cm)

Purchase, with funds from Nancy Poses and Fern Kaye Tessler 2018.157



Robin Graubard

cbgb's back room, n.d.

Black and white inkjet print

Sheet (sight): 7 1/2 x 11 1/4in. (19.1 x 28.6 cm)

Image (sight): 6 3/4 x 10in. (17.1 x 25.4 cm)

Gift of Martin and Rebecca Eisenberg 2018.130



Robin Graubard

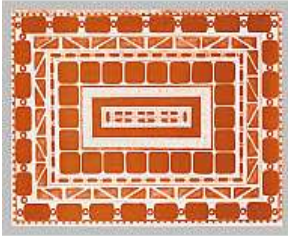
guy with boombox – Times Square, 1985

Lambda print

Sheet: 16 x 11 13/16in. (40.6 x 30 cm)

Image: 14 x 9 13/16in. (35.6 x 24.9 cm)

Purchase, with funds from Martin and Rebecca Eisenberg and Warren and Mitzi Eisenberg 2018.131



Mary Grigoriadis

Untitled, 1975

Screenprint

Sheet: 22 5/16 x 29 7/8in. (56.7 x 75.9 cm)

Purchase, with funds from the Print Committee 2018.179.12



Barbara Hammer

Barbara & Terry, 1972

Gelatin silver print on stock board

Sheet: 9 1/8 x 7in. (23.2 x 17.8 cm)

Image: 9 1/8 x 7in. (23.2 x 17.8 cm)

Mount: 10 1/2 x 10 1/4 x 1/8in. (26.7 x 26 x 0.3 cm)

Purchase, with funds from the Director's Discretionary Fund 2018.149



Anne Healy

Uncle Wiggley's Sky Blue Pink, 1976

Lithograph

Sheet: 30 1/4 x 22 3/8in. (76.8 x 56.8 cm)

Purchase, with funds from the Print Committee 2018.179.2



Lena Henke

City Lights (Dead Horse Bay), 2016

Bronze, painted wood

Overall: 44 1/2 x 49 1/2 x 25 3/4in. (113 x 125.7 x 65.4 cm)

Purchase, with funds from the Painting and Sculpture Committee 2018.191a-b



Naotaka Hiro

Untitled, 2018

Acrylic, wax crayon, oil pastel and graphite pencil on paper

Sheet: 42 x 32in. (106.7 x 81.3 cm)

Purchase, with funds from the Director's Discretionary Fund 2019.19



Naotaka Hiro

Untitled, 2018

Acrylic, wax crayon, oil pastel and graphite pencil on paper

Sheet: 42 x 32in. (106.7 x 81.3 cm)

Purchase, with funds from the Director's Discretionary Fund 2019.20



Channa Horwitz

Suite 8, 1979

Accordion-fold book with lithograph

22 x 20 1/2 in. (55.9 x 52 cm), closed; 22 x 200 in. (55.9 x 508 cm), open

Purchase, with funds from the Print Committee 2018.176



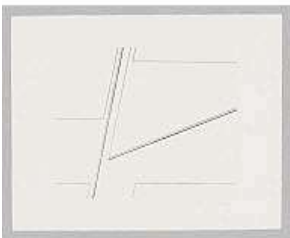
Channa Horwitz

Four Levels Composition #1, 1974-1980

Pen and ink on plastic film

Sheet: 42 1/4 x 109 3/4in. (107.3 x 278.8 cm)

Gift of the Channa Horwitz Art Trust 2018.262



Laurace James

Untitled, 1975

Etching

Sheet: 22 1/4 x 29 3/4in. (56.5 x 75.6 cm)

Plate: 15 3/4 x 20in. (40 x 50.8 cm)

Purchase, with funds from the Print Committee 2018.179.8



G. Peter Jemison

Liberty for Sale, 1987

Colored pencil and collage on paper

Overall: 19 x 13 x 5 1/2in. (48.3 x 33 x 14 cm)

Purchase, with funds from Thomas and Elisabeth Judson 2018.153



G. Peter Jemison

Buffalo Road III Choices, 1987-1990

Offset lithograph, collage and wax crayon

Sheet (sight): 65 1/2 x 46 3/4in. (166.4 x 118.7 cm)

Gift of Loren G. Lipson 2018.154



Susan Kaprov

Green Scream, 1975

Color photocopy

Sheet: 13 3/4 x 8 1/2in. (34.9 x 21.6 cm)

Image: 13 3/4 x 8 1/2in. (34.9 x 21.6 cm)

Gift of the Stoler Family Trust in memory of David Stoler 2018.159



Susan Kaprov

Triple Mouth, 1975

Color photocopy

Sheet: 13 3/4 x 8 1/2in. (34.9 x 21.6 cm)

Image: 13 3/4 x 8 1/2in. (34.9 x 21.6 cm)

Gift of the Stoler Family Trust in memory of David Stoler 2018.160



Susan Kaprov

Self-Portrait with Mouth & Hair, 1975

Color photocopy

Sheet: 13 3/4 x 8 1/2in. (34.9 x 21.6 cm)

Image: 13 3/4 x 8 1/2in. (34.9 x 21.6 cm)

Gift of the Stoler Family Trust in memory of David Stoler 2018.161



Susan Kaprov

Self-Portrait (with Red Streak), 1975

Color photocopy

Sheet: 13 11/16 × 8 1/2in. (34.8 × 21.6 cm)

Image: 13 11/16 × 8 1/2in. (34.8 × 21.6 cm)

Gift of the Stoler Family Trust in memory of David Stoler 2018.162



Susan Kaprov

Self-Portrait with Silhouette, 1975

Color photocopy

Sheet: 16 5/8 × 10 11/16in. (42.2 × 27.1 cm)

Image: 16 5/8 × 10 11/16in. (42.2 × 27.1 cm)

Gift of the Stoler Family Trust in memory of David Stoler 2018.163



Susan Kaprov

Self-Portrait in Shadow (Horizontal), 1976

Color photocopy

Sheet: 10 3/4 × 16 1/2in. (27.3 × 41.9 cm)

Image: 10 3/4 × 16 1/2in. (27.3 × 41.9 cm)

Mount: 11 1/4 × 17 × 1/16in. (28.6 × 43.2 × 0.2 cm)

Gift of the Stoler Family Trust in memory of David Stoler 2018.164



Susan Kaprov

Red Self-Portrait with Shadow, 1979

Color photocopy

Sheet: 16 1/4 × 10 5/8in. (41.3 × 27 cm)

Image: 16 1/4 × 10 5/8in. (41.3 × 27 cm)

Gift of the Stoler Family Trust in memory of David Stoler 2018.165



Susan Kaprov

Self-Portrait with Double Hand, 1981

Color photocopy

Sheet: 16 9/16 × 10 3/4in. (42.1 × 27.3 cm)

Image: 16 9/16 × 10 3/4in. (42.1 × 27.3 cm)

Mount: 17 1/16 × 11 1/4 × 1/16in. (43.3 × 28.6 × 0.2 cm)

Gift of the Stoler Family Trust in memory of David Stoler 2018.166



Susan Kaprov

Self-Portrait with Left Hand, 1981

Color photocopy

Sheet: 16 7/16 × 10 1/4in. (41.8 × 26 cm)

Image: 16 7/16 × 10 1/4in. (41.8 × 26 cm)

Mount: 16 15/16 × 10 3/4 × 1/16in. (43 × 27.3 × 0.2 cm)

Gift of the Stoler Family Trust in memory of David Stoler 2018.167



Susan Kaprov

The Wave, 1976

Color photocopy

Sheet: 16 1/4 × 10 3/4in. (41.3 × 27.3 cm)

Image: 16 1/4 × 10 3/4in. (41.3 × 27.3 cm)

Mount: 16 3/4 × 11 1/4 × 1/16in. (42.5 × 28.6 × 0.2 cm)

Gift of the Stoler Family Trust in memory of David Stoler 2018.168



Susan Kaprov

The Energy of Music, 1979

Color photocopy

Sheet: 16 × 10 9/16in. (40.6 × 26.8 cm)

Image: 16 × 10 9/16in. (40.6 × 26.8 cm)

Gift of the Stoler Family Trust in memory of David Stoler 2018.169



Susan Kaprov

Untitled Expression (1), 1976

Photocopy

Sheet: 11 × 14in. (27.9 × 35.6 cm)

Image: 11 × 14in. (27.9 × 35.6 cm)

Gift of the Stoler Family Trust in memory of David Stoler 2018.170



Susan Kaprov

Untitled Expression (2), 1976

Photocopy

Sheet: 11 × 14 1/16in. (27.9 × 35.7 cm)

Image: 11 × 14 1/16in. (27.9 × 35.7 cm)

Gift of the Stoler Family Trust in memory of David Stoler 2018.171



Susan Kaprov

Asleep on a Cloud, 1977

Photocopy

Sheet: 10 1/2 x 13 7/16in. (26.7 x 34.1 cm)

Image: 10 1/2 x 13 7/16in. (26.7 x 34.1 cm)

Gift of the Stoler Family Trust in memory of David Stoler 2018.172



Susan Kaprov

Self-Portrait as Dreamer, 1977

Photocopy

Sheet: 10 1/2 x 11 1/4in. (26.7 x 28.6 cm)

Image: 10 1/2 x 11 1/4in. (26.7 x 28.6 cm)

Gift of the Stoler Family Trust in memory of David Stoler 2018.173



Susan Kaprov

Self-Portrait in Motion, 1977

Photocopy

Sheet: 10 1/2 x 13 3/4in. (26.7 x 34.9 cm)

Image: 10 1/2 x 13 3/4in. (26.7 x 34.9 cm)

Gift of the Stoler Family Trust in memory of David Stoler 2018.174



Kurt Kauper

Study for Woman #3, 2017

Graphite on paper

Sheet (sight): 42 7/8 x 26in. (108.9 x 66 cm)

Image (sight): 42 7/8 x 26in. (108.9 x 66 cm)

Purchase, with funds from The Buddy Taub Foundation, Dennis A. Roach and Jill Roach Directors 2018.147



Kazuko

Untitled, 1975

Etching

Sheet: 22 3/8 x 30 1/8in. (56.8 x 76.5 cm)

Purchase, with funds from the Print Committee 2018.179.7



Christine Sun Kim

Too Much Future, 2017

Charcoal on paper

Sheet: 17 3/16 x 29 1/8in. (43.7 x 74 cm)

Image: 17 3/16 x 28 1/8in. (43.7 x 71.4 cm)

Purchase, with funds from the Drawing Committee 2018.183



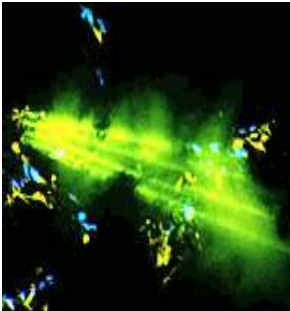
Louise Kramer

Untitled, 1976

Etching

Sheet: 22 1/8 x 30 1/8in. (56.2 x 76.5 cm)

Purchase, with funds from the Print Committee 2018.179.10



Antonia Kuo

Lily Jue Sheng

Mike Sidnam

Chromaflux, 2014

16mm film, color, sound, 8:20 min., transferred to HD video

Aspect Ratio: 16:9

Purchase, with funds from Anne and Joel Ehrenkranz 2018.128



Shio Kusaka

Untitled (triangle 25), 2010

Ceramic

Overall: 10 x 7 5/8 x 7 1/2in. (25.4 x 19.4 x 19.1 cm)

Gift of Avo Samuelian and Hector Manuel Gonzalez 2018.314



Shio Kusaka

Untitled, 2015

Ceramic

Overall: 9 1/4 x 11 x 10 1/2in. (23.5 x 27.9 x 26.7 cm)

Gift of Avo Samuelian and Hector Manuel Gonzalez 2018.315



Lynn Hershman Leeson

Water Woman - Blue Crown, 2001

Chromogenic print

Sheet (sight): 59 3/4 x 24 1/2in. (151.8 x 62.2 cm)

Gift of Bridget Donahue 2018.279



Lynn Hershman Leeson

Tempt Fate, 2018

Screenprint

Sheet: 7 3/8 x 9 5/16in. (18.7 x 23.7 cm)

Gift of Adam D. Weinberg in honor of Zoe A.Y. Weinberg 2018.299



Simone Leigh

Cupboard VIII, 2018

Stoneware, steel, raffia, Albany slip

Overall: 125 x 120 x 120in. (317.5 x 304.8 x 304.8 cm)

Gift of Bridgitt and Bruce Evans 2019.15



José Lerma

Beso de esquina, 2003

Oil on canvas

Overall: 19 1/8 x 20 5/8in. (48.6 x 52.4 cm)

Gift of Hallie McNeill 2018.291



Guadalupe Maravilla

Requiem for my border crossing and my undocumented father's #6, 2016-2018

Inkjet print with graphite pencil and ink

Sheet: 19 15/16 x 29 7/8in. (50.6 x 75.9 cm)

Purchase, with funds from Shelley Sonenberg 2019.13



Guadalupe Maravilla

Requiem for my border crossing (Collaborative drawing between the undocumented) #12, 2018

Inkjet print with graphite pencil and ink

Sheet (sight): 30 1/4 x 89 1/4in. (76.8 x 226.7 cm)

Purchase, with funds from the Director's Discretionary Fund and Sheree and Jerry Friedman 2019.14



Eva Mattes

Franco Mattes

Freedom, 2010

Video, color, sound, 8:56 min, with inflatable mattress, headphones and cables

Aspect Ratio: 16:9

Purchase, with funds from the Digital Art Committee 2018.188



Bjarne Melgaard

Untitled, 2010

Oil, spray paint, and markers on canvas

Overall: 60 1/8 x 44 9/16in. (152.7 x 113.2 cm)

Gift of Avo Samuelian and Hector Manuel Gonzalez 2018.318



Willa Nasatir

Sunbather, 2017

Chromogenic print

Sheet: 72 7/8 x 55 7/16in. (185.1 x 140.8 cm)

Image: 68 1/4 x 50 3/4in. (173.4 x 128.9 cm)

Mount: 75 x 57 5/8in. (190.5 x 146.4 cm)

Purchase, with funds from the Photography Committee 2018.189



Willa Nasatir

Conductor, 2017

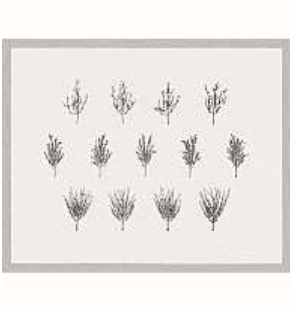
Chromogenic print mounted on wood

Sheet: 72 7/8 x 59 1/4in. (185.1 x 150.5 cm)

Image: 68 1/4 x 54 1/2in. (173.4 x 138.4 cm)

Mount: 75 x 61 3/8in. (190.5 x 155.9 cm)

Purchase, with funds from Sondra Gilman 2018.190



Patsy Norvell

Fruit Trees, 1976

Lithograph

Sheet: 22 3/8 x 30in. (56.8 x 76.2 cm)

Purchase, with funds from the Print Committee 2018.179.16



Ruth Orkin

Father hugging young girl at Penn Station, New York City, 1947

Gelatin silver print

Sheet: 9 1/2 x 7 1/2in. (24.1 x 19.1 cm)

Gift of the Ruth Orkin Photo Archive 2018.222



Ruth Orkin

Boy Diving into Hudson River, Gansevoort Pier, New York City, 1947

Gelatin silver print

Image: 9 1/2 x 6 3/4in. (24.1 x 17.1 cm)

Purchase, with funds from the Photography Committee 2019.21



Ruth Orkin

Sandstorm, West Village, New York City, 1949, printed 1981

Gelatin silver print

Image: 10 1/4 x 13 1/4in. (26 x 33.7 cm)

Purchase, with funds from the Photography Committee 2019.22



Pat Lasch

Ancestral Mountains, 1976

Lithograph

Sheet: 30 x 22 1/2in. (76.2 x 57.2 cm)

Purchase, with funds from the Print Committee 2018.179.15



Postcommodity

A Very Long Line, 2016

Four-channel digital video, color, sound

Aspect Ratio: 16:9

Purchase, with funds from the Director's Discretionary Fund, Russell Cowles, and Stuart and Kate Nielsen 2019.11



Ronny Quevedo

every measure of zero (periphery), 2017

Gold leaf on dressmaker's tracing paper

Sheet (sight): 9 3/4 x 13in. (24.8 x 33 cm)

Image (sight): 9 3/4 x 13in. (24.8 x 33 cm)

Purchase, with funds from Ann Ames in memory of Steven Ames 2018.142



Ronny Quevedo

every measure of zero (Nazca beyond the plain), 2017

Silver leaf and wax on paper

Sheet (sight): 9 7/8 x 13 1/8in. (25.1 x 33.3 cm)

Image (sight): 9 5/8 x 12 7/8in. (24.4 x 32.7 cm)

Purchase, with funds from Michael Straus in memory of Steven Ames 2018.143



Ronny Quevedo

oro blanco, 2017

Gold leaf and wax on paper

Sheet (sight): 11 1/16 x 14 7/8in. (28.1 x 37.8 cm)

Image (sight): 11 1/16 x 14 7/8in. (28.1 x 37.8 cm)

Purchase, with funds from Sheree and Jerry Friedman 2018.144



Deborah Roberts

Miseducation of Mimi #101, 2013

Collage, mixed media on paper

Sheet (sight): 17 x 14in. (43.2 x 35.6 cm)

Image (sight): 17 x 14in. (43.2 x 35.6 cm)

Purchase, with funds from Miyoung Lee and Neil Simpkins 2018.197



Deborah Roberts

Untitled Deb, 2014

Collage, mixed media on paper

Sheet: 17 x 14in. (43.2 x 35.6 cm)

Purchase, with funds from Sheree and Jerry Friedman 2018.198



Deborah Roberts

Miseducation of Mimi #91, 2014

Collage, mixed media on paper

Sheet: 17 x 14in. (43.2 x 35.6 cm)

Purchase, with funds from Sheree and Jerry Friedman 2018.199



Mariah Robertson

243, 2015

Chromogenic print

Sheet (irregular): 65 1/4 x 49 1/2in. (165.7 x 125.7 cm)

Gift of Eileen and Michael Cohen 2018.229



Chemi Rosado-Seijo

Sur Norte America (Hablando con Torres Garcia), 2016

Paint fragments, glass, wood

Overall: 13 1/4 x 10 1/4 x 1 5/8in. (33.7 x 26 x 4.1 cm)

Purchase, with funds from Joshua Mack 2018.158



David Benjamin Sherry

Storm Clearing Over Kings Canyon, Three Rivers, California, 2013

Traditional color darkroom photograph

Sheet (sight): 29 9/16 x 39 5/8in. (75.1 x 100.6 cm)

Gift of Avo Samuelian and Hector Manuel Gonzalez 2018.319



David Benjamin Sherry

Manorathadayakas, 2008

c-print

Sheet (sight): 29 7/8 x 38 1/16in. (75.9 x 96.7 cm)

Gift of Avo Samuelian and Hector Manuel Gonzalez 2018.320



Anita Steckel

The Subway, 1973, printed 1978

Gelatin silver print

Sheet (sight): 35 3/4 x 47 3/4in. (90.8 x 121.3 cm)

Gift of David Wilkinson 2018.292



Diamond Stingily

How Did He Die, 2016

Video, black-and-white, sound, 8:38 min. with chain-link fence

Aspect Ratio: 3:2

Purchase, with funds from the Film and Video Committee 2018.146



Clarissa Tossin

A cycle of time we don't understand (reversed, invented, and rearranged), 2017

Silicone, walnut, faux terracotta (dyed plaster)

Dimensions variable

Purchase, with funds from the Painting and Sculpture Committee 2019.35a-e



Clarissa Tossin

Yaxchilán Lintel 25 (feathered serpent), 2017

Silicone, walnut, faux serpent skin (vinyl), synthetic hair, quetzal faux feather (dyed rooster feather)

Dimensions variable

See individual components

Purchase, with funds from the Painting and Sculpture Committee and Sonia and Gaurav Kapadia 2019.36a-d



Clarissa Tossin

A two-headed serpent held in the arms of human beings, or, Ticket Window, 2017

Silicone, walnut, faux terracotta (dyed plaster)

Overall: 44 13/16 x 53 x 5 1/4in. (113.8 x 134.6 x 13.3 cm)

Purchase, with funds from the Painting and Sculpture Committee 2019.37a-c



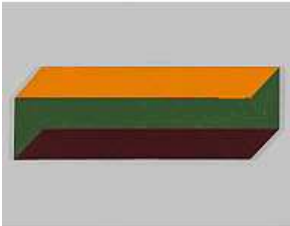
Clarissa Tossin

Ha' K'in Xook, from Piedras Negras to Hill Street, 2017

Silicone, walnut, jaguar faux fur, quetzal faux feather (dyed rooster feather)

Overall: 91 3/4 x 33 1/2 x 16 3/8in. (233 x 85.1 x 41.6 cm)

Purchase, with funds from the Painting and Sculpture Committee 2019.38



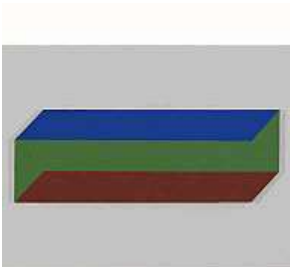
Leo Valledor

Odelight, 1964

Acrylic on canvas

Overall: 35 15/16 x 109 1/2in. (91.3 x 278.1 cm)

Gift of Mark di Suvero 2019.40



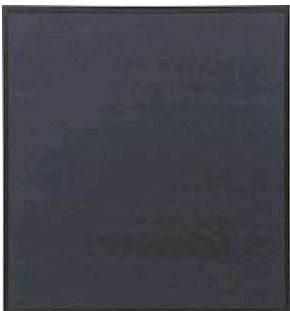
Leo Valledor

Serena, 1964

Acrylic on canvas

Overall: 35 7/8 x 109 3/4in. (91.1 x 278.8 cm)

Gift of Mark di Suvero 2019.41



Artie Vierkant

Air filter and method of constructing same 9, Black Square (Exploit), 2013

Aluminum and fiberglass mesh

Overall: 45 1/16 x 45 x 1/4in. (114.5 x 114.3 x 0.6 cm)

Gift of Ricky Manne 2018.254



Kay WalkingStick

April Contemplating May, 1972

Acrylic on canvas

Overall: 49 7/8 x 49 7/8in. (126.7 x 126.7 cm)

Purchase, with funds from the Painting and Sculpture Committee 2018.138



Jon Wang

From Its Mouth Came a River of High-End Residential Appliances, 2018

Video, color, sound, 22 min.

Aspect Ratio: 16:9

Promised gift of Robert Rosenkranz P.2019.1



Mary Weatherford

Pier 'n' Ocean, 2017

Flashe and neon on linen

Overall: 117 x 105 x 4in. (297.2 x 266.7 x 10.2 cm)

Purchase, with funds from Lauren and Derek Goodman, Jody and Ira Schwartz, and Gayle and Paul Stoffel 2018.152a-c



Walter Zimmerman

Untitled, 1986

Color photocopy

Sheet: 11 x 8 1/2in. (27.9 x 21.6 cm)

Image: 11 x 8 1/2in. (27.9 x 21.6 cm)

Gift of the artist 2019.2



Walter Zimmerman

Untitled, 1986

Color photocopy

Sheet: 8 1/2 x 11in. (21.6 x 27.9 cm)

Image: 8 1/2 x 11in. (21.6 x 27.9 cm)

Gift of the artist 2019.3



Walter Zimmerman

Untitled, 1986

Color photocopy

Sheet: 11 × 8 1/2in. (27.9 × 21.6 cm)

Image: 11 × 8 1/2in. (27.9 × 21.6 cm)

Gift of the artist 2019.4



Walter Zimmerman

Untitled, 1986

Color photocopy

Sheet: 11 × 8 1/2in. (27.9 × 21.6 cm)

Image: 11 × 8 1/2in. (27.9 × 21.6 cm)

Gift of the artist 2019.5



Walter Zimmerman

Untitled, 1986

Color photocopy

Sheet: 11 × 8 1/2in. (27.9 × 21.6 cm)

Image: 11 × 8 1/2in. (27.9 × 21.6 cm)

Gift of the artist 2019.6



Walter Zimmerman

Untitled, 1986

Color photocopy

Sheet: 11 × 8 1/2in. (27.9 × 21.6 cm)

Image: 11 × 8 1/2in. (27.9 × 21.6 cm)

Gift of the artist 2019.7



Walter Zimmerman

Untitled, 1986

Color photocopy

Sheet: 11 × 8 1/2in. (27.9 × 21.6 cm)

Image: 11 × 8 1/2in. (27.9 × 21.6 cm)

Gift of the artist 2019.8



Walter Zimmerman

Untitled, 1986

Color photocopy

Sheet: 11 x 8 1/2in. (27.9 x 21.6 cm)

Image: 11 x 8 1/2in. (27.9 x 21.6 cm)

Gift of the artist 2019.9



Walter Zimmerman

Untitled, 1986

Color photocopy

Sheet: 11 x 8 1/2in. (27.9 x 21.6 cm)

Image: 11 x 8 1/2in. (27.9 x 21.6 cm)

Gift of the artist 2019.10